

Halogen (< 75 V) with Reflector



Areas of application

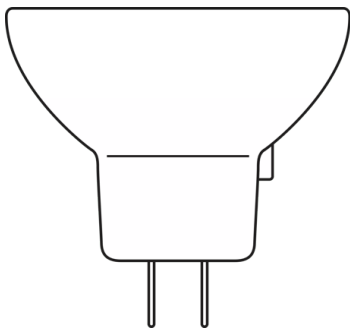
- Microscopy
- Laboratory & Analysis
- UV Curing
- Fiber Illumination
- Surgical & Dental Overhead

Product features and benefits

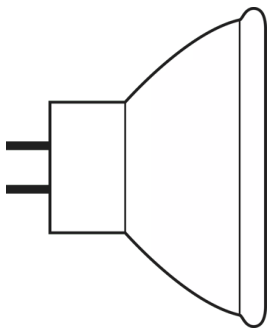
- Precise filament and reflector alignment with patented quartz pinch technology
- HLX lamps provide 10% higher luminous flux with same power consumption over standard halogen
- Instant on and nearly constant luminous flux over the life of the lamp
- Dimmable



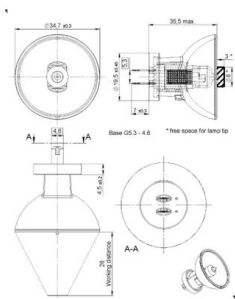
Product family datasheet



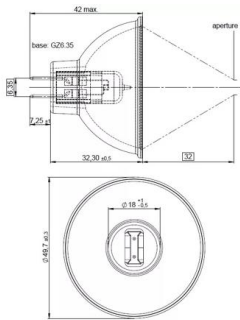
HALOGEN LAMP WITH REFLECTOR 64255



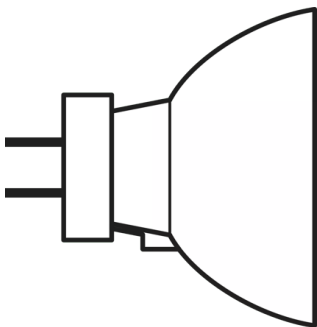
Halogen Lamp with reflector MR16



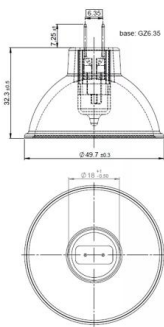
64617S 75W 12V



64615 HLX 75W 12V

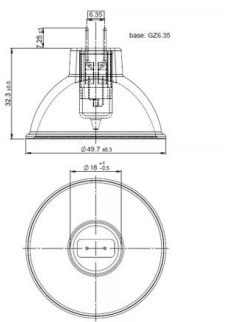


Halogen Lamp with reflector MR11

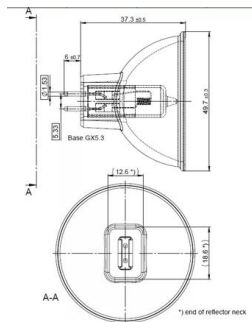


64634 HLX 150W 15V

Product family datasheet



64627 HLX 100W 12V



64653 HLX 250W 24V

Product family datasheet

Technical data

	General Product Information		Electrical Data	Physical Attributes & Dimensions
Product description	ANSI code	LIF code	Nominal voltage	Lamp base
64255 20 W 8 V	-	-	8 V	G4
93520 300 W 82 V ¹⁾	FHS	-	82 V	GX5.3
64607 50 W 8 V	EFM	A1/229	8 V	GZ6.35
64619 90 W 14.5 V	EPX	-	14.5 V	GX5.3
93506 250 W 120 V	ENH	-	120 V	GY5.3
64617 S 75 W 12 V ²⁾	-	-	12 V	G5.3-4.8
64615 HLX	EFN	A1/230	12 V	GZ6.35
64617 75 W 12 V	-	M/117	12 V	G5.3-4.8
64634 HLX	EFR	A1/232	15 V	GZ6.35
64627 HLX	EFP	A1/231	12 V	GZ6.35
64624 100 W 12 V	-	A1/51	12 V	G5.3-4.8
64659 250 W 24 V	ELC	A1/259	24 V	GX5.3
93518 300 W 120 V	ELH	-	120 V	GY5.3
64629 100 W 12 V	EFP	A1/231	12 V	GZ6.35
64637 100 W 12 V	EBV	A1/271	12 V	GZ6.35
64635 HLX ³⁾	-	-	15 V	GZ6.35
64620 150 W 15 V	EFR	A1/232	15 V	GZ6.35
64653 HLX	ELC	A1/259	24 V	GX5.3
93637 150 W 21 V	EJV	-	21 V	GX5.3
93638 150 W 21 V	EKE	-	21 V	GX5.3
93653 250 W 24 V	ELC	A1/259	24 V	GX5.3

	Lifetime Data
Product description	Nominal lifetime
64255 20 W 8 V	50 hr
93520 300 W 82 V ¹⁾	70 hr
64607 50 W 8 V	50 hr
64619 90 W 14.5 V	500 hr
93506 250 W 120 V	175 hr
64617 S 75 W 12 V ²⁾	25 hr
64615 HLX	50 hr
64617 75 W 12 V	25 hr
64634 HLX	50 hr
64627 HLX	50 hr
64624 100 W 12 V	25 hr
64659 250 W 24 V	1000 hr
93518 300 W 120 V	35 hr
64629 100 W 12 V	600 hr
64637 100 W 12 V	1500 hr
64635 HLX ³⁾	50 hr
64620 150 W 15 V	500 hr

Product family datasheet

Product description	Lifetime Data
	Nominal lifetime
64653 HLX	50 hr
93637 150 W 21 V	100 hr
93638 150 W 21 V	200 hr
93653 250 W 24 V	300 hr

1) Available on request
2) Spot adjustment
3) Infra-red lamp; temperature at the focal point approximately 1300 °C

Product family datasheet

Safety advice

To prevent personal injury or damage to property, halogen lamps may only be operated in suitable luminaires designed with suitable mechanisms (protective shields, grids, etc.) to ensure that in the event of a lamp bursting no parts/shards can escape and that during operation no ultraviolet radiation can escape. There must also be a warning sign to indicate that the lamps give off high levels of heat. Detailed information is available on request.

Application advice

For more detailed application information and graphics please see product datasheet.

Disclaimer

Subject to change without notice. Errors and omission excepted. Always make sure to use the most recent release.