

## PL-CORE-G7 1000-830 L10 H1

PrevaLED Core G7 L10 H1 | Spot-, Down- and Wallmount Light Engines and Modules



### Areas of application

- Spot lighting in shops and retail
- Down- and wall lighting in offices, corridors, meeting rooms, workplaces
- Decorative and functional lighting in hospitality, hotels, restaurants
- Functional lighting in public and commercial buildings

### Product family benefits

- Easy integration thanks to very compact form factor
- Easy cooling due to optimized efficiency and high maximum operation temperature
- High driver flexibility allows cost-effective and intelligent systems
- 5 year guarantee

### Product family features

- Complete portfolio with varying luminous flux, color temperature, color rendering
- Available with color temperature: 2,700 K, 3,000 K, 3,500 K or 4,000 K
- High module efficacy: up to 156 lm/W at  $T_p = 65^\circ\text{C}$
- Lifetime (L80/B10): 60,000 h (temperature  $T_p$  at  $T_p = 65^\circ\text{C}$ )
- LED module is basic isolated to mounting surface
- Photobiological safety according to IEC/TR 62778, risk group RG1
- Max. working voltage: 60 V (to be operated only on SELV LED control gear)



## Product datasheet

### Technical data

#### Electrical data

Nominal wattage	6.80 W
Rated wattage	6.80 W
Nominal voltage	35.1 V
Nominal current	0.195 A
Type of current	DC

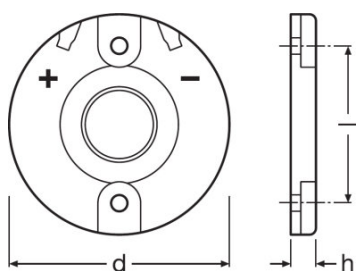
#### Photometrical data

Total useful luminous flux	1000 lm
Luminous efficacy	146 lm/W
Standard deviation of color matching	≤3 sdc <sub>m</sub>
Color temperature	3000 K
Color rendering index Ra	≥80
Light color (designation)	Warm White

#### Light technical data

Rated beam angle (half peak value)	115.00 °
Starting time	0.0 s
Warm-up time (60 %)	0.00 s
Beam angle	120 °

#### Dimensions & weight



Rated height	3.50 mm <sup>1)</sup>
Product weight	3.00 g
Diameter	35.0 mm

<sup>1)</sup> general tolerances ISO 2768-c

### Temperatures & operating conditions

Performance temp. acc. to IEC 62717	65 °C
Maximum temperature at tc test point	100 °C
Ambient temperature range	-20...+50 °C
Temperature range at storage	-20...60 °C

### Lifespan

Lumen main.fact.at end of nom.life time	0.80
Lifespan	60000 h
Rated lamp life time	60000 h
Number of switching cycles	100000

### Additional product data

Product remark	Modules perfectly matched to OSRAM OPTOTRONIC LED drivers (see relevant table)/For current photometric data and important safety, installation and application information (see <a href="http://www.osram.com/led-systems">www.osram.com/led-systems</a> )/All the technical parameters apply to the entire module. In view of the complex manufacturing process for light emitting diodes, the typical values given above for the technical LED parameters are merely statistical values that do not necessarily correspond to the actual technical parameters of an individual product; individual products may vary from the typical values/Tolerance for optical and electrical data: +/-10%
----------------	--

### Capabilities

Dimmable	Yes
----------	-----

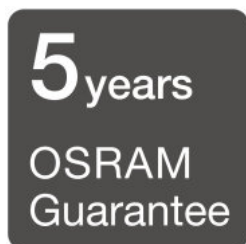
### Certificates & standards

Energy consumption	7 kWh/1000h
Energy efficiency class	A++
Standards	CE/ENEC

### Logistical data

Commodity code	854140100000
----------------	--------------

## Product datasheet







---

### Guarantee

---

### Download Data

File	
	Addon Technical Information PrevaLED Core G7 Overview
	Brochures Technical application guide - PrevaLED Core G7 (EN)
	Certificates ENEC Certificate PL CORE G7
	Declarations of conformity Declaration of Conformity PL-CORE-G7

---

### Logistical Data

Product code	Product description	Packaging unit (Pieces/Unit)	Dimensions (length x width x height)	Volume	Gross weight
4052899533943	PL-CORE-G7 1000-830 L10 H1	Shipping carton box 100	270 mm x 221 mm x 77 mm	4.59 dm <sup>3</sup>	710.00 g

The mentioned product code describes the smallest quantity unit which can be ordered. One shipping unit can contain one or more single products. When placing an order, for the quantity please enter single or multiples of a shipping unit.

---

### References / Links

For more information on the multi-level guarantee and the terms and conditions of the guarantee visit

- ▶ [www.osram.com/system-guarantee](http://www.osram.com/system-guarantee)

---

### Disclaimer

Subject to change without notice. Errors and omission excepted. Always make sure to use the most recent release.