

## PL-CORE-G7 1000-835 L10 H1

PrevaLED Core G7 L10 H1 | Spot-, Down- and Wallmount Light Engines and Modules



### Areas of application

- Spot lighting in shops and retail
- Down- and wall lighting in offices, corridors, meeting rooms, workplaces
- Decorative and functional lighting in hospitality, hotels, restaurants
- Functional lighting in public and commercial buildings

### Product family benefits

- Easy integration thanks to very compact form factor
- Easy cooling due to optimized efficiency and high maximum operation temperature
- High driver flexibility allows cost-effective and intelligent systems
- 5 year guarantee

### Product family features

- Complete portfolio with varying luminous flux, color temperature, color rendering
- Available with color temperature: 2,700 K, 3,000 K, 3,500 K or 4,000 K
- High module efficacy: up to 156 lm/W at  $T_p = 65^\circ\text{C}$
- Lifetime (L80/B10): 60,000 h (temperature  $T_p$  at  $T_p = 65^\circ\text{C}$ )
- LED module is basic isolated to mounting surface
- Photobiological safety according to IEC/TR 62778, risk group RG1
- Max. working voltage: 60 V (to be operated only on SELV LED control gear)



## Product datasheet

### Technical data

#### Electrical data

|                 |         |
|-----------------|---------|
| Nominal wattage | 6.60 W  |
| Rated wattage   | 6.60 W  |
| Nominal voltage | 35.0 V  |
| Nominal current | 0.189 A |
| Type of current | DC      |

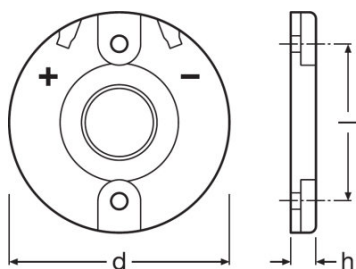
#### Photometrical data

|                                      |               |
|--------------------------------------|---------------|
| Total useful luminous flux           | 1000 lm       |
| Luminous efficacy                    | 152 lm/W      |
| Standard deviation of color matching | $\leq 3$ sdcn |
| Color temperature                    | 3500 K        |
| Color rendering index Ra             | $\geq 80$     |
| Light color (designation)            | Neutral White |

#### Light technical data

|                                    |          |
|------------------------------------|----------|
| Rated beam angle (half peak value) | 115.00 ° |
| Starting time                      | 0.0 s    |
| Warm-up time (60 %)                | 0.00 s   |
| Beam angle                         | 120 °    |

#### Dimensions & weight



|                |                       |
|----------------|-----------------------|
| Rated height   | 3.50 mm <sup>1)</sup> |
| Product weight | 3.00 g                |
| Diameter       | 35.0 mm               |

<sup>1)</sup> general tolerances ISO 2768-c

### Temperatures & operating conditions

|                                      |              |
|--------------------------------------|--------------|
| Performance temp. acc. to IEC 62717  | 65 °C        |
| Maximum temperature at tc test point | 100 °C       |
| Ambient temperature range            | -20...+50 °C |
| Temperature range at storage         | -20...60 °C  |

### Lifespan

|   |         |
|---|---------|
| Lumen main.fact.at end of nom.life time | 0.80    |
| Lifespan                                | 60000 h |
| Rated lamp life time                    | 60000 h |
| Number of switching cycles              | 100000  |

### Additional product data

|                |  |
|----------------|--|
| Product remark | Modules perfectly matched to OSRAM OPTOTRONIC LED drivers (see relevant table)/For current photometric data and important safety, installation and application information (see <a href="http://www.osram.com/led-systems">www.osram.com/led-systems</a> )/All the technical parameters apply to the entire module. In view of the complex manufacturing process for light emitting diodes, the typical values given above for the technical LED parameters are merely statistical values that do not necessarily correspond to the actual technical parameters of an individual product; individual products may vary from the typical values/Tolerance for optical and electrical data: +/-10% |
|----------------|--|

### Capabilities

|          |     |
|----------|-----|
| Dimmable | Yes |
|----------|-----|

### Certificates & standards

|                         |             |
|-------------------------|-------------|
| Energy consumption      | 7 kWh/1000h |
| Energy efficiency class | A++         |
| Standards               | CE/ENEC     |

### Logistical data

|                |              |
|----------------|--------------|
| Commodity code | 854140100000 |
|----------------|--------------|

## Product datasheet







---

### Guarantee

---

### Download Data

| File  |  |
|---|--|
|    | Addon Technical Information<br>PrevaLED Core G7 Overview           |
|    | Brochures<br>Technical application guide - PrevaLED Core G7 (EN)   |
|   | Certificates<br>ENEC Certificate PL CORE G7                        |
|  | Declarations of conformity<br>Declaration of Conformity PL-CORE-G7 |

---

### Logistical Data

| Product code  | Product description           | Packaging unit (Pieces/Unit) | Dimensions (length x width x height) | Volume               | Gross weight |
|---------------|-------------------------------|------------------------------|--------------------------------------|----------------------|--------------|
| 4052899533967 | PL-CORE-G7 1000-835<br>L10 H1 | Shipping carton box<br>100   | 270 mm x 221 mm x 77 mm              | 4.59 dm <sup>3</sup> | 710.00 g     |

The mentioned product code describes the smallest quantity unit which can be ordered. One shipping unit can contain one or more single products. When placing an order, for the quantity please enter single or multiples of a shipping unit.

---

### References / Links

For more information on the multi-level guarantee and the terms and conditions of the guarantee visit

- ▶ [www.osram.com/system-guarantee](http://www.osram.com/system-guarantee)

---

### Disclaimer

Subject to change without notice. Errors and omission excepted. Always make sure to use the most recent release.