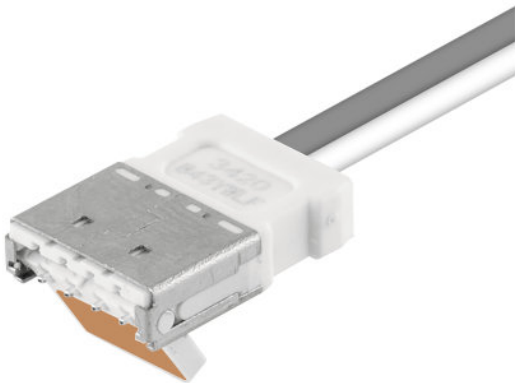


White 2pin Flexible LED strips Connector

Accessories for Flexible LED strips



Product family features

- Quick and easy installation
- Compatible with Linearlight Flex
- Compatible with TEC Flex

Product family benefits

- Simple installation, no tools or soldering required (CONNECTsystem)
- Reduced installation time (CONNECTsystem)
- Can be connected to the front of the module or at division points (CONNECTsystem)
- Low profile (CONNECTsystem)

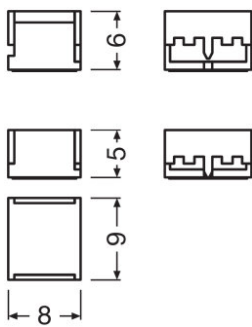
Product family datasheet

Technical data

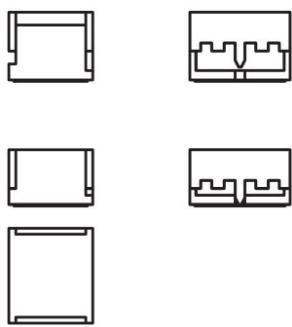
	Dimensions & weight		Logistical data	Environmental information Information according Art. 33 of EU Regulation (EC) 1907/2006 (REACH)
Product description	Length	Product weight	Commodity code	Date of Declaration
FX -SC08-G2-CT4PJ	9.0 mm	0.80 g	85366990990	30-08-2022
CONN-FLEX -2P-050 KIT 10PCS	5193 mm	954 g	85366990990	03-08-2022
CONN-FLEX -2P-200 KIT 10PCS	2019 mm	3523 g	85366990990	03-08-2022
CORNER-FLEX -4P-003 KIT 10PCS	686 mm	297 g	85366990990	25-04-2022
CORNER-FLEX -4P-015 KIT 10PCS	1886 mm	708 g	85366990990	25-04-2022

Product description	Primary Article Identifier	Candidate List Substance 1	Declaration No. in SCIP database
FX -SC08-G2-CT4PJ	4052899464858	No declarable substances contained	No declarable substances contained
CONN-FLEX -2P-050 KIT 10PCS	4062172179591	No declarable substances contained	No declarable substances contained
CONN-FLEX -2P-200 KIT 10PCS	4062172179614	No declarable substances contained	No declarable substances contained
CORNER-FLEX -4P-003 KIT 10PCS	4062172179638	No declarable substances contained	No declarable substances contained
CORNER-FLEX -4P-015 KIT 10PCS	4062172179676	No declarable substances contained	No declarable substances contained

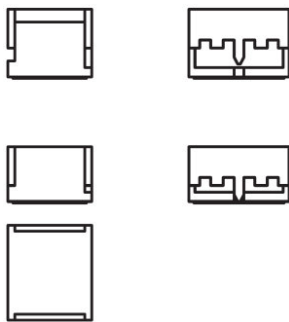
Product family datasheet



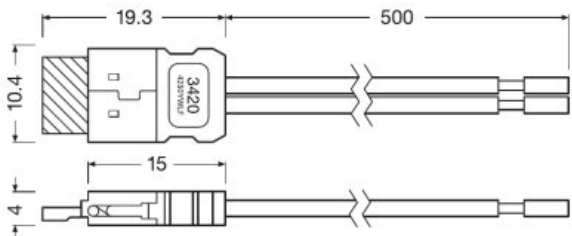
729184_ACC LECV LF B2B Conn. 12,7 5 3 G2



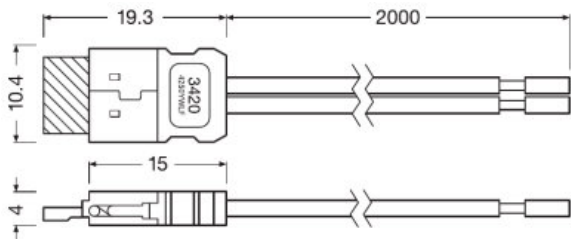
729196_ACC LECV LF B2B Conn. 12,7 5 3 G2



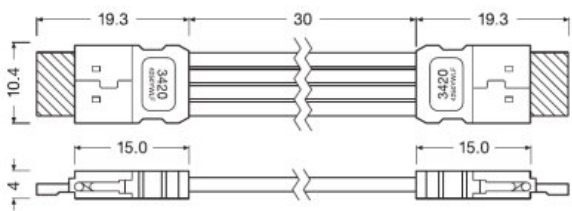
729327_FX-SC08-G2_CT4PJ 50XFS25



CONN-FLEX-2P

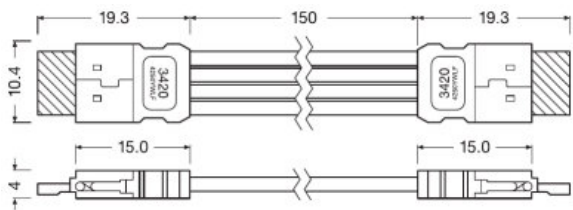


CONN-FLEX-2P-200



CORNER-FLEX-4P-003

Product family datasheet



CORNER-FLEX-4P-015




Application advice

For more detailed application information and graphics please see product datasheet.

Sales and Technical Support

Sales and Technical Support www.osram.com

Download Data

File	
	User instruction Connection System for LINEARlight Flex & TEC Flex IP00
	Product Datasheet 726951_SLIMCONNECT SYSTEM 08 G2
	Brochures Light is freedom of design (EN)

Product family datasheet

Ecodesign regulation information:

- This product is considered to be a "containing product" in the sense of Regulations (EU) 2019/2020 and (EU) 2019/2015.
- Tolerances of the reported values, are according to LED Modules Performance standard IEC/EN 62717.
- In general, the replacement of the contained light sources without permanent damage to the product with the use of common available tools is possible in the final application when they can be dismantled from the installation environment and substituted for the necessary number of light sources restoring its full electrical/mechanical/thermal/optical functionality by means of a professional installer. In the contrary, and limited to the LINEARlight Flex Diffuse, LINEARlight Rigid Finesse, GINO LED Flex Diffuse and LUMINENT Milky product families, the contained light source is an integrated part of the containing product and its removal can only be done by causing a permanent damage to the containing product due to its tight mechanical, electrical, optical, thermal interaction and/or environmental protection with or from the containing product. Therefore, a replacement of the light source with the use of common available tools is not justified.
- Dismantling of light sources from containing products at end of life: Containing products with light sources which are scalable in length can be cut to the length of the contained light source and if applicable mechanically detached from protective and/or optical covers. Containing products shall be separated from building material and/or from other additional mounting accessories by means of a professional installer. Separate control gear and light sources must be disposed of at certified disposal companies in accordance with Directive 2012/19/EU (WEEE) in the EU and with Waste Electrical and Electronic Equipment (WEEE) Regulations 2013 in the UK. For this purpose, collection points for recycling centres and take-back systems (CRSO) are available from retailers or private disposal companies, which accept separate control gear and light sources free of charge. In this way, raw materials are conserved and materials are recycled.

Logistical Data

Product code	Product description	Packaging unit (Pieces/Unit)	Dimensions (length x width x height)	Volume	Gross weight
4052899464858	FX -SC08-G2-CT4PJ	Shipping carton box 1250	510 mm x 340 mm x 315 mm	54.62 dm ³	3914.00 g
4062172179591	CONN-FLEX -2P-050 KIT 10PCS	Shipping carton box 10	337 mm x 270 mm x 400 mm	36.35 dm ³	2050.00 g
4062172179614	CONN-FLEX -2P-200 KIT 10PCS	Shipping carton box 10	337 mm x 270 mm x 400 mm	36.35 dm ³	2307.00 g
4062172179638	CORNER-FLEX -4P-003 KIT 10PCS	Shipping carton box 10	337 mm x 270 mm x 400 mm	36.35 dm ³	1985.00 g
4062172179676	CORNER-FLEX -4P-015 KIT 10PCS	Shipping carton box 10	337 mm x 270 mm x 400 mm	36.35 dm ³	2026.00 g

The mentioned product code describes the smallest quantity unit which can be ordered. One shipping unit can contain one or more single products. When placing an order, for the quantity please enter single or multiples of a shipping unit.

Disclaimer

Subject to change without notice. Errors and omission excepted. Always make sure to use the most recent release.