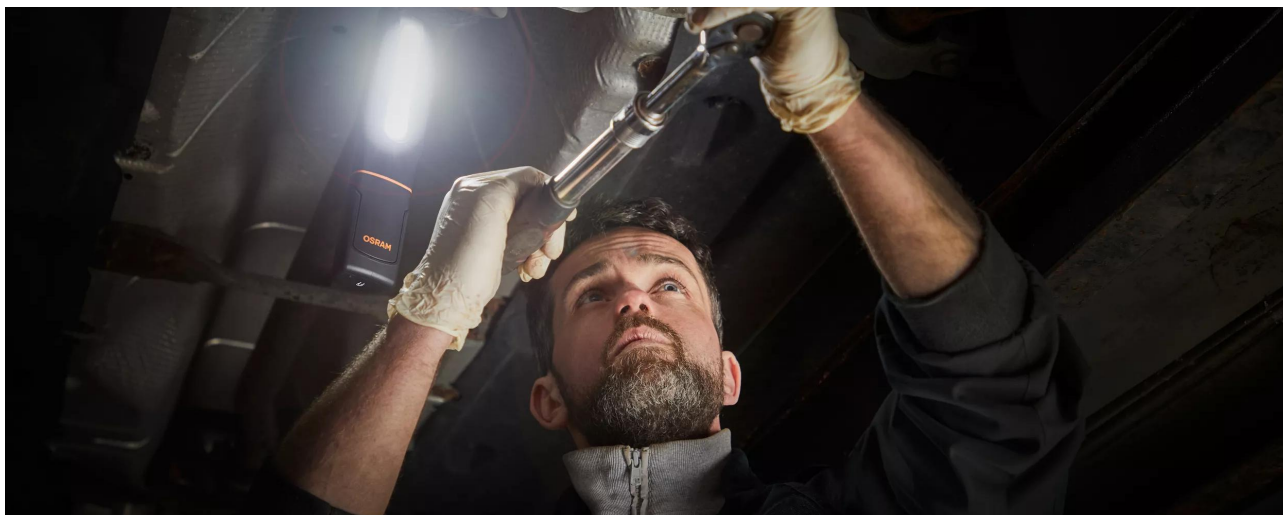


# LEDinspect MAX500

LED Inspectionlights



### Multi-Angle Flex & Twist

High flexibility due to multiple positioning possibilities



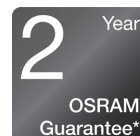
### 2in1

LED Inspectionlight & UV lamp in one



### 500 Lumen

Three light functions - high with up to 500 lm, low with up to 250 lm and torchlight function with up to 70 lm



### 2-year-OSRAM guarantee\*

Systematic quality assurance measures underpin the premium workmanship and functionality of our products. Innovative technology and excellent quality really pay dividends for our customers.



### Light is versatile

With three light functions - high with up to 500lm, low with up to 250lm and UV torchlight, the MAX500 offers high flexibility and different application possibilities. The 360° twist and 180° flex base give maximum flexibility to be able to adjust the angle of light exactly where needed. The integrated charge indicator shows the charging status of the rechargeable battery - up to 4.5h operating time at high power or up to 7.5h at low power. In accordance with the IP protection class IP65, this inspection light has protection against the ingress of dust and water and is tested for impact resistance in accordance with IK08. This inspection light contains an integrated hook & magnets for hands-free work and easy attachment and is therefore ideal as a light for manual activities, car repairs and in everyday life. In addition, OSRAM grants a 2-year guarantee on this product\* USB charging cable and mains charger included.

# Product family datasheet

## Technical data

|                     | Product information                         | General Product Information | Electrical Data |                 |
|---------------------|---|-----------------------------|-----------------|-----------------|
| Product description | Application (Category and Product specific) | Global order reference      | Nominal voltage | Nominal wattage |
| INSPECTION LAMP     | LED inspection lights                       | LEDIL402                    | 3.7 V           | 16 W            |

|                     | Photometric Data |                       |                   | Physical Attributes & Dimensions |
|---------------------|------------------|-----------------------|-------------------|----------------------------------|
| Product description | Light color LED  | Nominal luminous flux | Color temperature | Height                           |
| INSPECTION LAMP     | White            | 500 lm                | 5700 K            | 44.0 mm                          |

|                     | Width   | Length   | Product weight | LED module information    |
|---------------------|---------|----------|----------------|---------------------------|
| Product description |         |          |                | Number of LEDs per module |
| INSPECTION LAMP     | 59.0 mm | 253.0 mm | 350.00 g       | 2                         |

|                     | Colors & materials | Lifetime Data | Additional product data |                              |
|---------------------|--------------------|---------------|-------------------------|------------------------------|
| Product description | Base color         | Guarantee     | Scope of battery        | Number of included batteries |
| INSPECTION LAMP     | Black / Orange     | 2 years       | Yes                     | 1                            |

|                     |                 | Capabilities | Certificates & standards | Logistical data       |
|---------------------|-----------------|--------------|--------------------------|-----------------------|
| Product description | Type of Battery | Technology   | IK Class                 | Watt hour per battery |
| INSPECTION LAMP     | Rechargeable    | LED          | IK08                     | 16.65                 |



|                     | Environmental & Regulatory Information<br>Information according Art. 33 of EU Regulation (EC) 1907/2006 (REACH) |                            |                        |  |
|---------------------|---|----------------------------|------------------------|--|
| Product description | Date of declaration   | Candidate list substance 1 | CAS No. of substance 1 | Safe use instruction   |
| INSPECTION LAMP     | 11-10-2024  | Lead                       | 7439-92-1              | The identification of the Candidate List substance is sufficient to allow safe use of the article. |

| Product description | Declaration no. in SCIP database     |
|---------------------|--------------------------------------|
| INSPECTION LAMP     | 4ea2e5ca-7a27-48f2-b810-484a294b269a |

## Product family datasheet

---

### Download Data

| File  |   |
|---|---|
|  | User instruction<br>LEDinspect MAX 500 LEDIL402           |
|  | Movie application<br>LEDinspect Inspection Lights Trailer |

#### Legal advice

Application advice:

For more detailed application information and graphics please see product datasheet and user instruction.\*for precise conditions please refer to:

[www.osram.com/am-guarantee](http://www.osram.com/am-guarantee)

#### Application advice

For more detailed application information and graphics please see product datasheet.

#### Disclaimer

Subject to change without notice. Errors and omission excepted. Always make sure to use the most recent release.